

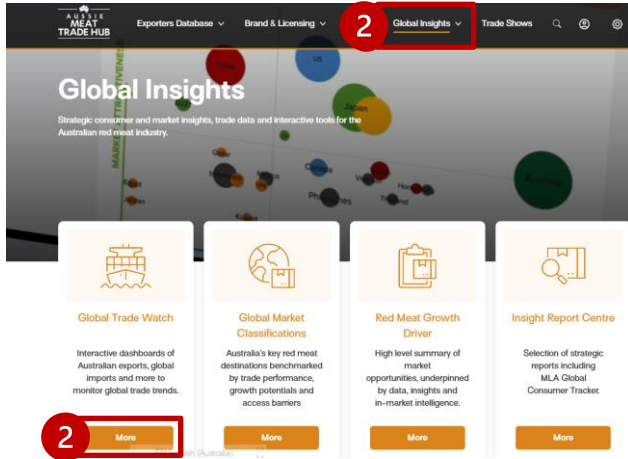
# RED MEAT IMPORTS DASHBOARD



Found on Aussie Meat Trade Hub, this dashboard provides data visualisation of beef, sheepmeat and goatmeat imports<sup>1</sup> into key markets. This document is a high-level step by step overview on how to use the dashboard, with an example on how to use the dashboard for analysis.

## 1 How to access the dashboard

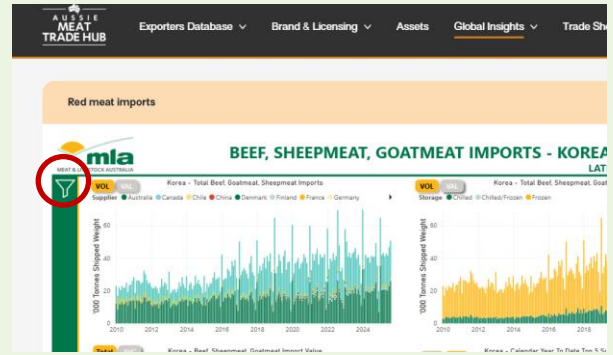
1. Log in to the Aussie Meat Trade Hub<sup>2</sup>
2. From the top navigation menu to navigate to 'Global Insights' and select 'Global Trade Watch' from drop down or use quick navigation and click 'More' under 'Global Trade Watch'
3. Click on 'Red meat imports dashboard'



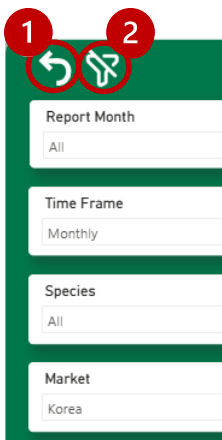
## 2 How to use the dashboard

Select the filter icon to adjust the information you want to view:

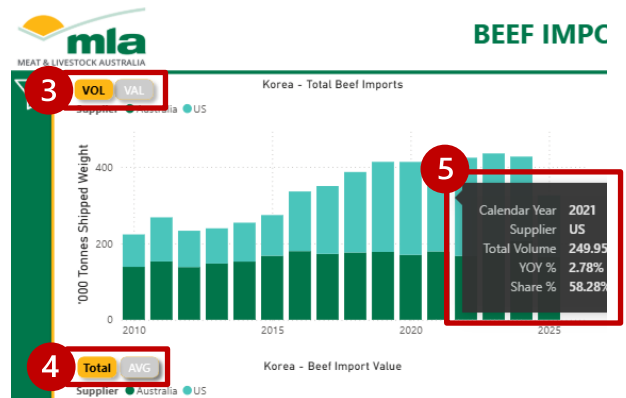
- Report Month (Date range)
- Time Frame – monthly, quarterly, Calendar Year or Financial Year
- Species (Beef, Sheepmeat or Goatmeat)
- Market (Destination country or country group)
- Storage (Chilled, Frozen, Chilled/Frozen<sup>3</sup>)
- Suppliers



## 3 Dashboard features



1. Return to the chart view
2. Reset filters
3. Switch between Volume / Value
4. Switch between total value ("Total") / average value ("AVG")
5. Hover over charts for more detailed information
6. View data table by right clicking on any chart and select view table
7. Screenshot using Shift + S + Windows key or the Microsoft Snipping tool



Notes: <sup>1</sup> Data on Australia includes re-imports from Australia. These are items that were exported and then brought back into the country, possibly with minor changes like packaging, cleaning, or sorting; <sup>2</sup> Australian producers, processors and exporters can access Global Trade Watch by signing up and logging in the site; <sup>3</sup> Storage="Chilled/Frozen" only applies to Species="goatmeat"



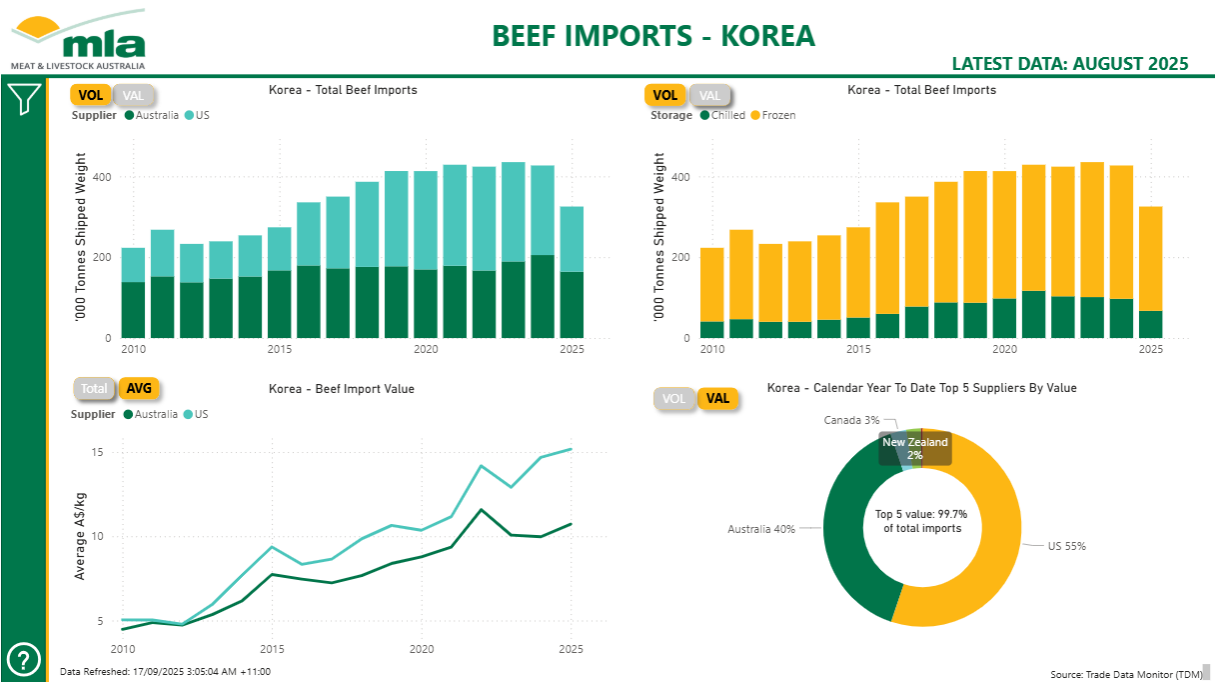
# ANALYSIS REPORT EXAMPLE:

A comparison of Australian beef and US beef in Japan and Korea



## 1 Step to Follow

1. Log in to the Aussie Meat Trade Hub and go to Global Insights > Global Trade Watch > Red meat imports
2. For Korea imports charts, use the filter icon on the left to select:
  - Report months="Select all"
  - Time Frame="Calendar year"
  - Species="Beef"
  - Market="Korea"
  - Storage="Select all"
  - Suppliers="Australia", "US"
  - Change Import value chart (bottom left chart) from Total to AVG
3. Open a new web browser tab and repeat the steps above but update Market="Japan", to create the same view for Japan
4. Screenshot both Korea and Japan views and paste them into a report document. For further analysis, view detailed information (Feature 5) or view the data table (Feature 6).
5. An example of the report is shown on the next page



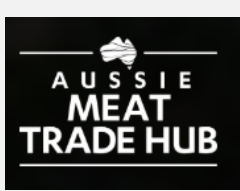
Click here to visit

# Global Insights

on Aussie Meat Trade Hub  
to follow along with the example above  
or check out more insights and resources

# ANALYSIS REPORT EXAMPLE:

A comparison of Australian beef and US beef in Japan and Korea

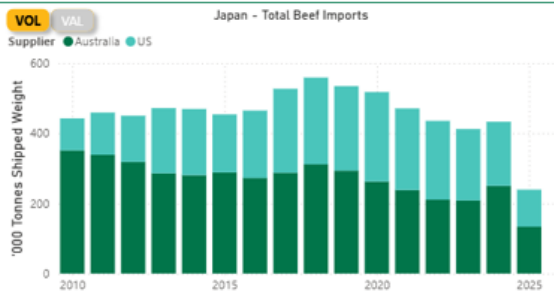
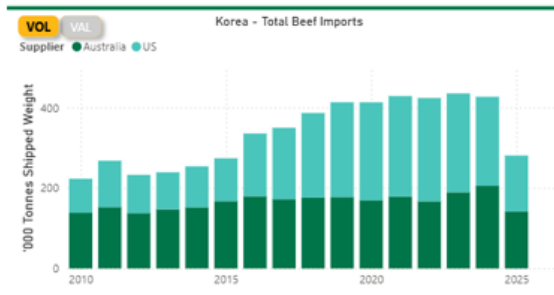


## 2 Analysis Report Example

### Australian beef imports into Japan and Korea

**Objective of the report:** Track the volume, value, and market share of Australian beef imports into Japan and Korea and evaluate Australia's performance against its largest competitor—the United States (US).

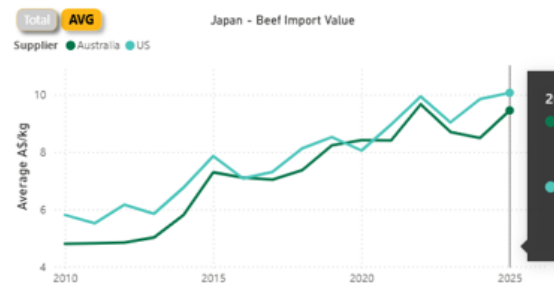
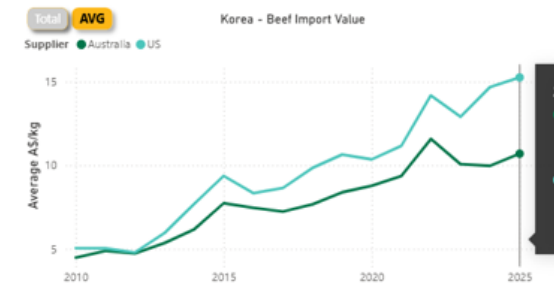
#### Key findings (as of YTD July 2025)



- **Australia leads in volume:** Australia is the largest supplier of beef to both Japan and Korea by volume.
- In Korea, 93% of imported beef comes from just two countries, with the US maintaining a strong presence.



- **Value comparison:** The average value of US beef imports is significantly higher in Korea than in Japan.
- **Competitive outlook:** Competition for Australian beef in Korea is expected to intensify. This is due to the US benefiting from a lower tariff rate (2.6% in 2025, 0% in 2026), while Australia faces a significantly higher tariff because of the beef safeguard (previously 8%, now 24% for the rest of 2025).



**EXAMPLE ONLY**