

HOW TO CREATE CALENDAR YEAR DATA TABLE USING THE EXPORT DASHBOARD



1 What is this?

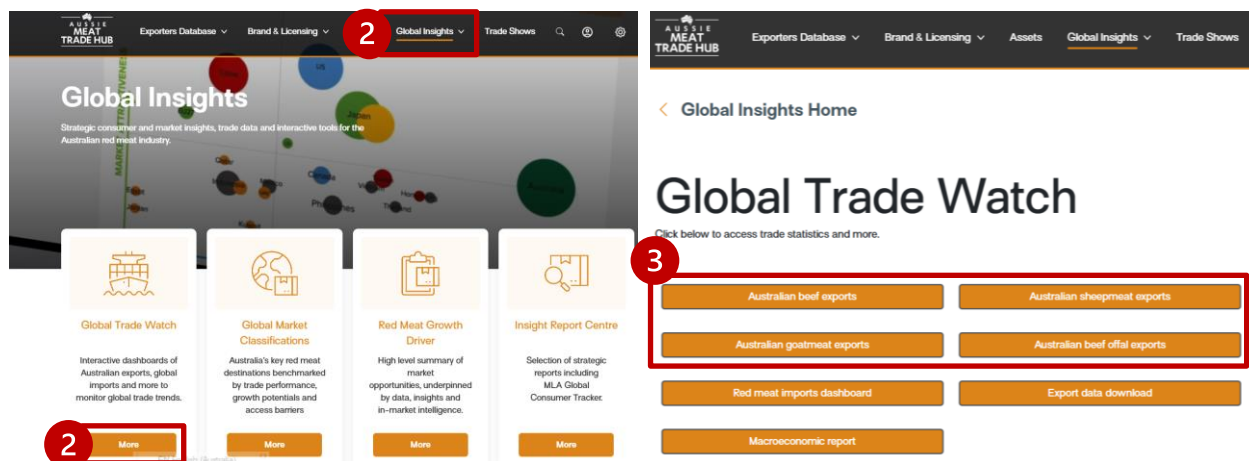
- The Data section of the Australian export dashboards for [beef](#), [sheepmeat](#), [goatmeat](#) and [beef offal](#) allows you to recreate a data table for any of your analysis needs

2 What you'll need?

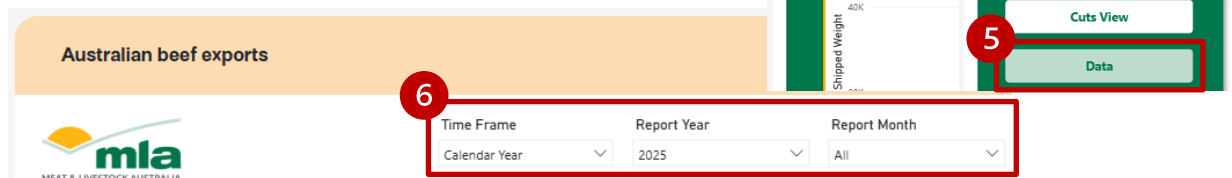
- Access to the dashboards¹
- Excel (or similar spreadsheet tool)
- 5 minutes

3 Getting the Data

- Log in to the Aussie Meat Trade Hub
- From the top navigation menu to navigate to 'Global Insights' and select 'Global Trade Watch' from drop down or use quick navigation and click 'More' under 'Global Trade Watch'
- Click on any of the Australian export dashboards highlighted below depending on what you're after e.g. if you want the beef export data, click on the first one



- Once the dashboard has loaded, click on the three stacked lines icon and a menu will pop up
- Click on 'Data' to navigate to the data table view
- Along the top of the data table are menus that control time, ensure the following is selected:
 - Time Frame="Calendar Year"
 - Report Year="2025"
 (Note: if you'd like to compare CY2024 figures to CY2025, then also select 2024 here)
 - Report Month="All"



Tip: Other 'Time Frame' is available including monthly, quarterly and financial year too!

HOW TO CREATE CALENDAR YEAR DATA TABLE USING THE EXPORT DASHBOARD

4 Getting the data (continued)

7. The buttons along the top control what columns appear in the data table.

- Market → Buttons in **black** means they have been selected in the data table
- Region → Buttons in **light green** means it's not yet selected in the data table

Click the columns you'd like to see or if you want something with similar information to the monthly Excel files, click on the "Region" button to remove it which will also make all the columns available appear in the data table.

Australian beef exports

Time Frame: Calendar Year | Report Year: 2025 | Report Month: All | LATEST DATA: NOVEMBER 2025

Buttons: Meat Type, Region, Market, Cut Group, Cut, Chemical Lean, Storage Type, Bone Status, Feed Type

Calendar Year	Storage Type	Market	Cut	Cut Group	Feed Type	Bone Status	Chemical Lean	Weight (Tonnes)
2025	Chilled	Bahrain	Back Rib	Ribs	Grain Fed	Bone-In		1.63
2025	Chilled	Bahrain	Beef Trimmings	Manufacturing	Grain Fed	Boneless		8.14
2025	Chilled	Bahrain	Beef Trimmings	Manufacturing	Grass Fed	Boneless		5.77

8. After you're happy with your selection, move your mouse to the area where the data table is and you will see some icons pop up in the top right corner. Click on the one with three dots (...)

9. Another menu will come up, select 'Export Data'

10. It will ask which data you'd like to export, select 'Summarised data' for now.

Next click on 'Export' button in bottom right corner and the data will start downloading.

Which data do you want to export?

Export your data in the format that suits your needs. If you have a lot of data, the number of rows you export might be limited depending on the file type you select. [Learn more about exporting data](#)

Options: Data with current layout, Summarized data, Underlying data

File format: .xlsx (Excel 150,000-row max)

Buttons: Export, Cancel

11. Once the download is complete, open the file and it should look like the below data table. You're welcome to use the data as is now but if you'd like to learn how to summarise the data and analyse it a bit further, please read on.

Applied filters: Year ID is 2025 or 2024 | Time Frame is Calendar Year | Meat Type Group Desc is Beef And Veal

Calendar Year	Meat Type	Region	Market	Cut Group	Cut	Chemical Lean	Storage Type	Bone Status	Feed Type	Weight
2024	Beef	Africa	Angola	Rump	Rump Cap		Frozen	Boneless	Grass Fed	74.19
2024	Beef	Africa	Senegal	Cube Roll	Cube Roll		Chilled	Boneless	Grain Fed	0.17
2024	Beef	Africa	Senegal	Cube Roll	Cube Roll		Frozen	Boneless	Grain Fed	0.52
2024	Beef	Africa	Senegal	Other	Hamburger		Chilled	Boneless	Grain Fed	0.26
2024	Beef	Africa	Senegal	Ribs Prep	Rib Prep		Chilled	Bone-In	Grain Fed	0.28
2024	Beef	Africa	Senegal	Ribs Prep	Rib Prep		Frozen	Bone-In	Grain Fed	0.49
2024	Beef	Africa	Senegal	Striploin	Striploin		Chilled	Boneless	Grain Fed	0.06

HOW TO CREATE CALENDAR YEAR DATA TABLE USING THE EXPORT DASHBOARD

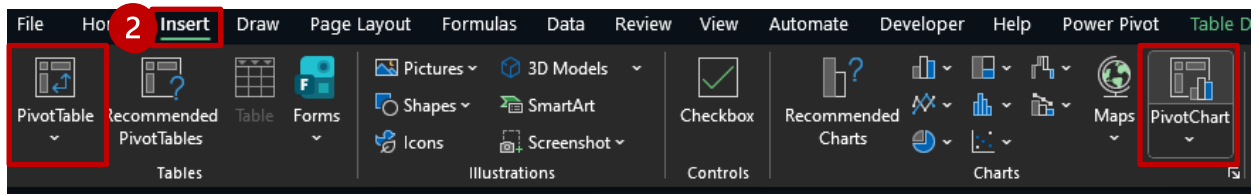
4 Analyzing in Excel

1. In the Excel file, ensure you have one of the cells selected e.g. in the image below, the 'Calendar Year' heading has been selected.

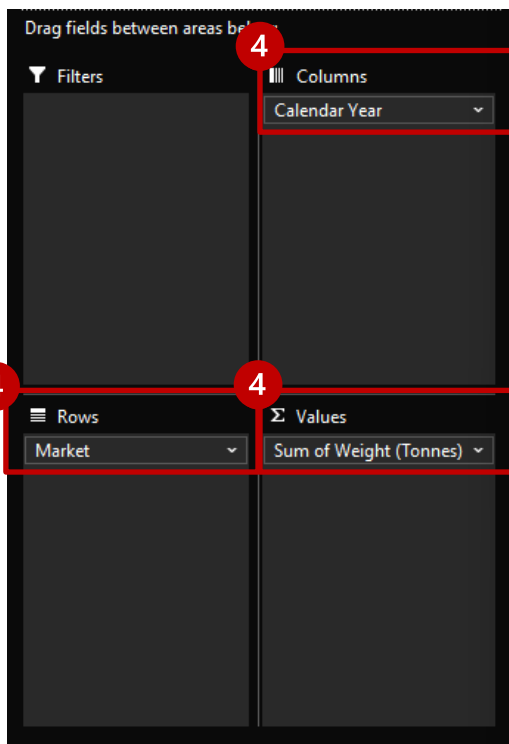
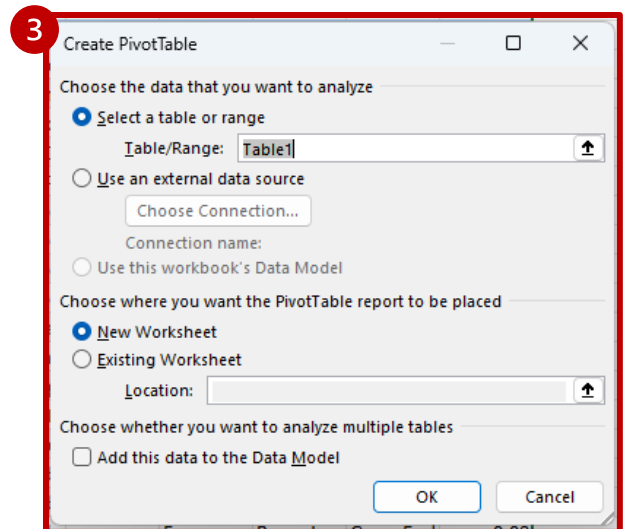
Applied filters: Year ID is 2025 or 2024 Time Frame is Calendar Year Meat Type Group Desc is Beef And Veal

Calendar	Meat T	Region	Market	Cut Gr	Cut	Chemic	Storage	Bone S	Feed Ty	Weight
2024	Beef	Africa	Angola	Rump	Rump Cap		Frozen	Boneless	Grass Fed	74.19
2024	Beef	Africa	Senegal	Cube Roll	Cube Roll		Chilled	Boneless	Grain Fed	0.17
2024	Beef	Africa	Senegal	Cube Roll	Cube Roll		Frozen	Boneless	Grain Fed	0.52
2024	Beef	Africa	Senegal	Other	Hamburge		Chilled	Boneless	Grain Fed	0.26
2024	Beef	Africa	Senegal	Ribs Prep	Rib Prepai		Chilled	Bone-In	Grain Fed	0.28
2024	Beef	Africa	Senegal	Ribs Prep	Rib Prepai		Frozen	Bone-In	Grain Fed	0.49
2024	Beef	Africa	Senegal	Striploin	Striploin -		Chilled	Boneless	Grain Fed	0.06

2. Next go to 'Insert' the top menus in Excel and select either:
 - 'Pivot Table' if you only want create table to summarise the numbers
 - 'Pivot Chart' same as above but also creates a chart time to visualise the data you're summarising



3. A new window will pop up, you can leave the settings as default which will look something like the window to the right where it's already got your data source selected and it will put your pivot table into a new sheet in Excel.

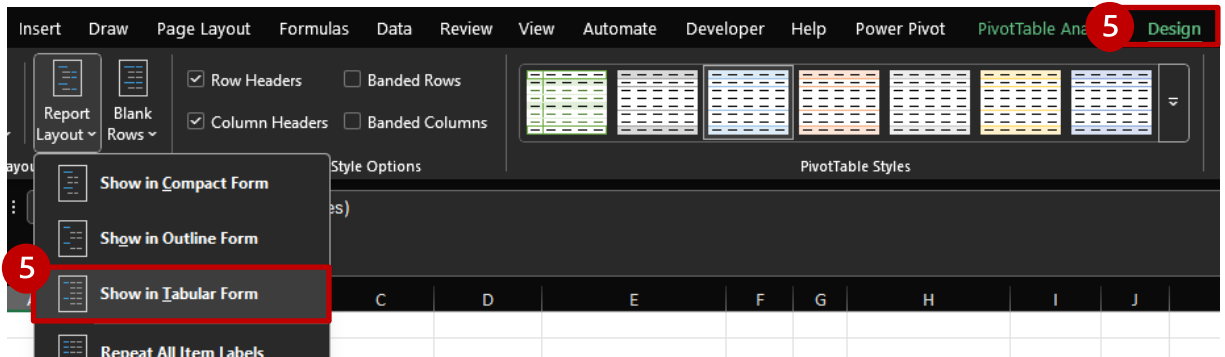


4. In the new Sheet, click on the new item that's been added labelled 'PivotTable1' (or similar). When you do this, a menu will pop up on the right which has a selection of data e.g. market, cut, etc that you can use for analysis in this pivot table. TO get a basic table. Do the following steps first:
 - Drag and drop 'Calendar Year' into Columns
 - Drag and drop 'Market' into Rows
 - Drag and drop 'Weight (Tonnes)' into Values
 You've just created a table comparing export volume for 2024 vs 2025 across destinations.

HOW TO CREATE CALENDAR YEAR DATA TABLE USING THE EXPORT DASHBOARD

4 Analyzing in Excel (continued)

- To make it a little bit neater, while still selected on the Pivot Table, go to the Design menu at the top. Click on the little down arrow under 'Report Layout' and select 'Show in Tabular form'.



- From here you'll end up with something like the table to the right. You can see the respective total volumes for 2024 and 2025* at the bottom of the column.

Sum of Weight (Tonnes)	Column Labels	2024	2025	Grand Total
Row Labels				
American Samoa			22.15	22.15
Angola	130.42	97.94		228.35
Bahrain	329.97	469.54		799.51
Belgium Luxembourg	1.26	2.56		3.82
Bhutan	0.97	2.39		3.31



THINGS FOR YOU TO TRY:

- Only want to know about a specific cut?** Drag and drop 'Cut Group' or 'Cut' (for even more detailed cut categorisations) to the Filters section of PivotTable Fields and select the specific cut from the drop-down menu to see data for just that cut.
- I only want to know about one market?** Move 'Market' from Rows to Filters section of PivotTable Fields then select the market you want to look at on in the drop-down menu
- Play around with adding different information to the filter and get an even more detailed view e.g. if you only want to see chilled grassfed beef volume, add 'Storage Type' and 'Feed Type' into the Filters section, then select 'Chilled' and 'Grassfed' for the respective filters in the drop-down menus

Click here to visit

Global Insights

on Aussie Meat Trade Hub

to follow along with the example above

or check out more insights and resources

